

Transforming Healthcare through Biomedical Engineering and Digital Innovation

Aulia Rahman^{1*}, Nadia Putri² and Rizky Mahendra³

¹ Department of Biomedical Engineering, Institut Teknologi Bandung, Bandung, Indonesia

² Faculty of Engineering, Universitas Indonesia, Depok, Indonesia

³ Department of Electrical and Biomedical Engineering, Institut Teknologi Sepuluh Nopember, Surabaya, Indonesia

*Corresponding author's: aulia.rahman@itb.ac.id

DOI: <http://dx.doi.org/10.56828/jsr.2026.5.1.2>

Article Info: Received: (January 16, 2026); Review Result: (February 20, 2026);

Accepted: (March 30, 2026)

Abstract: Biomedical engineering has emerged as a critical interdisciplinary field that integrates engineering principles with medical and biological sciences to improve healthcare systems, medical technologies, and patient outcomes. In Indonesia, biomedical engineering is increasingly significant in addressing national healthcare challenges, including unequal access to healthcare, a high disease burden, limited medical infrastructure, and reliance on imported medical devices. This paper examines the development of biomedical engineering in Indonesia by analyzing its academic foundations, healthcare applications, industrial growth, and research advancements. The study explores the contributions of Indonesian universities, government agencies, hospitals, and research institutions toward medical technology innovation. Furthermore, the paper discusses major healthcare challenges in Indonesia, including communicable and non-communicable diseases, rural healthcare disparities, and shortages of medical equipment. It evaluates how biomedical engineering solutions can address these issues. Several Indonesian case studies are presented, including locally developed ventilators during the COVID-19 pandemic, telemedicine systems, wearable health monitoring technologies, and biomedical imaging innovations. The discussion contextualizes global biomedical engineering trends within Indonesia's socioeconomic and healthcare landscape, emphasizing opportunities in artificial intelligence, digital health, rehabilitation engineering, and medical device manufacturing. The findings indicate that Indonesia possesses substantial potential to become a regional biomedical engineering hub; however, improvements in research funding, industrial collaboration, regulatory frameworks, and workforce development remain essential. The paper concludes that biomedical engineering is strategically important for Indonesia's healthcare modernization and technological independence, particularly as the nation seeks to strengthen healthcare resilience and support sustainable national development.

Keywords: Biomedical engineering, Indonesia, Medical technology, Healthcare innovation, Telemedicine, Medical devices, Digital health, Healthcare systems

¹ORCID: 0000-0002-4587-9134

1. Introduction

Biomedical engineering has become one of the most rapidly expanding interdisciplinary fields in modern healthcare, integrating engineering principles, biological sciences, medicine, computer science, and digital technologies to improve disease prevention, diagnosis, treatment, and rehabilitation. Globally, biomedical engineering has contributed to major advancements in medical imaging, biosensors, Artificial Intelligence (AI)-assisted diagnostics, wearable health devices, telemedicine, robotic surgery, biomaterials, and Internet of Medical Things (IoMT) systems [1]. The digitalization of healthcare systems following the COVID-19 pandemic has further heightened the strategic importance of biomedical engineering in both developed and developing countries.

In Indonesia, biomedical engineering is increasingly vital for addressing persistent healthcare inequalities, limited medical infrastructure, and reliance on imported medical devices. Indonesia is the fourth most populous nation in the world, with more than 270 million inhabitants spread across 17,000 islands. This geographic complexity creates major barriers to equitable healthcare delivery, particularly in remote and rural areas where access to hospitals, diagnostic facilities, medical specialists, and emergency healthcare services remains limited [2]. Consequently, Indonesia requires innovative healthcare technologies that support decentralized, digitally connected healthcare systems.

Recent studies have emphasized that biomedical engineering innovations such as telemedicine platforms, portable diagnostic devices, wearable biosensors, AI-assisted medical imaging, and electronic medical record systems are increasingly essential for improving healthcare accessibility and efficiency in Indonesia [3][4]. During the COVID-19 pandemic, telemedicine adoption increased substantially as healthcare providers sought alternatives to face-to-face consultations. Research by Alexandra et al. demonstrated that acceptance of teleconsultation among Indonesian healthcare professionals and patients significantly increased due to the urgent need for remote healthcare delivery and the improved digital health infrastructure [5]. Similarly, Andiani et al. reported that telemedicine in Indonesia enhanced healthcare accessibility, reduced geographic barriers, improved patient monitoring, and supported healthcare continuity during the pandemic period [6].

Indonesia currently faces a dual burden of disease involving both communicable and non-communicable diseases. Infectious diseases such as tuberculosis, dengue fever, and malaria continue to pose major public health concerns, while chronic diseases, including cardiovascular disease, diabetes, stroke, and cancer, are increasing rapidly due to demographic transitions, urbanization, and lifestyle changes [7]. Biomedical engineering technologies offer significant opportunities to strengthen disease management through intelligent monitoring systems, AI-assisted diagnostics, rehabilitation technologies, and remote patient monitoring platforms.

The rapid expansion of digital healthcare technologies has also transformed Indonesia's healthcare ecosystem. Digital health companies such as Halodoc and Alodokter have expanded healthcare accessibility through online consultations, electronic prescriptions, health monitoring applications, and integrated telemedicine systems. Studies published between 2024 and 2026 further indicate that telemedicine and AI integration are becoming increasingly important for healthcare delivery in resource-constrained settings, particularly in Southeast Asia [8][9]. Moreover, the implementation of Electronic Medical Records (EMRs) in Indonesian healthcare facilities has improved clinical efficiency, reduced patient waiting times, and enhanced healthcare data management [10].

Indonesian universities and research institutions have also expanded their biomedical engineering programs and innovation initiatives. Institutions such as Institut Teknologi Bandung, Universitas Indonesia, Universitas Gadjah Mada, and Institut Teknologi Sepuluh Nopember increasingly collaborate with hospitals, government agencies, and industries to develop healthcare technologies suited to Indonesia's local healthcare needs. Research areas include biomedical instrumentation, rehabilitation engineering, biosignal processing, medical imaging, biomaterials, and digital health systems.

The COVID-19 pandemic highlighted Indonesia's vulnerability to disruptions in the global medical supply chain while simultaneously underscoring the importance of local biomedical engineering innovation. Indonesian researchers and engineers rapidly developed emergency ventilators, low-cost Personal Protective Equipment (PPE), telemedicine platforms, and portable diagnostic systems to address healthcare shortages [11]. These initiatives illustrated the growing capacity of Indonesian biomedical engineers to contribute to national healthcare resilience and technological independence.

Despite these developments, Indonesia's biomedical engineering sector continues to face substantial challenges. These include limited research funding, unequal healthcare infrastructure, and a shortage of skilled biomedical engineers, insufficient local medical device manufacturing capabilities, cybersecurity concerns, and evolving regulatory frameworks for digital healthcare technologies [12]. Recent research also emphasizes the need for stronger legal and ethical governance concerning AI-based healthcare systems and telemedicine regulation in Indonesia [13].

Globally, biomedical engineering continues to evolve toward AI-enabled healthcare, IoMT integration, smart hospitals, personalized medicine, and predictive healthcare analytics [1][9]. For Indonesia, these advancements present both opportunities and challenges. The country has significant potential to become a regional biomedical technology hub, driven by its large healthcare market, growing digital economy, and increasing government support for healthcare innovation. However, achieving this goal requires stronger collaboration among universities, healthcare institutions, industries, policymakers, and research agencies.

Therefore, this paper aims to examine the development and role of biomedical engineering within the Indonesian context. Specifically, the paper explores Indonesia's biomedical engineering landscape, healthcare challenges, medical technology innovations, educational development, industrial applications, and future opportunities. By contextualizing global biomedical engineering trends within Indonesia's healthcare system and socioeconomic conditions, this study highlights the strategic importance of biomedical engineering in supporting healthcare modernization, technological independence, and sustainable national development.

2. Literature Review

Biomedical engineering has undergone a rapid global transformation between 2020 and 2026, driven by advances in Artificial Intelligence (AI), digital health technologies, biosensors, telemedicine, wearable medical systems, robotics, and smart healthcare infrastructure. The COVID-19 pandemic significantly accelerated the adoption of biomedical technologies worldwide, particularly in developing countries, where limited healthcare access and infrastructure created urgent demand for digital and remote healthcare solutions [14]. In Indonesia, biomedical engineering has become an increasingly important interdisciplinary field, supporting healthcare modernization, public health resilience, and domestic medical technology innovation.

2.1. Global trends in biomedical engineering

Recent literature highlights that biomedical engineering is increasingly integrated with AI, machine learning, Internet of Medical Things (IoMT), and cloud-based healthcare systems [15]. Modern biomedical systems now support predictive diagnostics, remote patient monitoring, precision medicine, robotic-assisted surgery, and automated clinical workflows. According to Karkanis [1], digital telecommunications and interconnected biomedical systems have fundamentally transformed healthcare delivery by enabling real-time clinical communication, telemonitoring, and intelligent diagnostic support systems.

AI integration represents one of the most influential developments in biomedical engineering. Studies published between 2024 and 2026 demonstrate that AI-assisted medical systems significantly improve disease detection, healthcare analytics, and medical imaging interpretation [16][17]. Biomedical AI models are increasingly capable of analyzing multimodal medical data, including radiological images, biosignals, laboratory results, and genomic information, simultaneously [18]. These systems contribute to faster diagnosis, improved clinical decision-making, and enhanced healthcare efficiency.

The Organization for Economic Cooperation and Development (OECD) reported that AI-enabled healthcare technologies are becoming essential for addressing healthcare workforce shortages, aging populations, and increasing healthcare demands [17]. AI-powered systems are now widely utilized in radiology, pathology, rehabilitation engineering, personalized medicine, and virtual healthcare assistance. However, ethical governance, patient privacy, algorithm transparency, and cybersecurity remain major global concerns [19][20].

2.2. Biomedical engineering in developing countries

Developing countries face unique biomedical engineering challenges, including limited healthcare infrastructure, uneven resource distribution, a shortage of medical specialists, and dependence on imported medical technologies [21]. Consequently, low-cost biomedical devices, portable diagnostics, and telemedicine systems have become central research priorities.

Studies conducted across Southeast Asia indicate that biomedical engineering solutions can substantially improve healthcare accessibility in geographically fragmented regions [22]. Portable medical devices, mobile health platforms, and cloud-based healthcare systems enable healthcare providers to deliver services to underserved communities where conventional healthcare infrastructure is limited.

Research also suggests that biomedical engineering contributes significantly to healthcare resilience during public health emergencies. During the COVID-19 pandemic, biomedical engineers worldwide supported rapid ventilator production, digital surveillance systems, medical robotics, and telehealth deployment [23]. These experiences reinforced the strategic importance of local biomedical engineering capacity and medical device self-sufficiency.

2.3. Development of biomedical engineering in Indonesia

Indonesia's biomedical engineering sector has expanded considerably over the past decade. The country's large population, archipelagic geography, and rising healthcare demands have spurred investment in digital healthcare and medical technology innovation [24]. Indonesian universities increasingly offer biomedical engineering programs that emphasize medical

instrumentation, biosignal processing, biomaterials, rehabilitation engineering, and healthcare informatics.

Research by Juliansyah et al. found that Indonesian healthcare institutions have accelerated the implementation of Electronic Medical Record (EMR) systems to improve healthcare data integration, operational efficiency, and patient management [4]. EMR adoption also supports national healthcare digitalization initiatives such as SatuSehat, Indonesia's integrated healthcare data ecosystem.

The Indonesian government has identified healthcare technology development as an important national priority. Government-supported initiatives encourage domestic medical device manufacturing, healthcare digitization, AI implementation, and interoperability between healthcare systems [25]. Recent studies indicate that Indonesia's biomedical engineering ecosystem is increasingly characterized by collaborations among universities, hospitals, government agencies, and private technology companies [26].

2.4. Telemedicine and digital health in Indonesia

Telemedicine is among the most extensively studied biomedical engineering applications in Indonesia between 2020 and 2026. Indonesia's geographical fragmentation and unequal distribution of healthcare make telemedicine highly relevant for improving healthcare accessibility.

Research by Alexandra et al. showed that telemedicine acceptance among Indonesian hospitals increased significantly during the COVID-19 pandemic due to mobility restrictions and healthcare capacity limitations [5]. Healthcare professionals and patients increasingly adopted digital consultation systems for diagnosis, monitoring, and follow-up care.

Similarly, Andiani et al. reported that telemedicine platforms reduced travel burdens, lowered healthcare costs, and improved specialist access for patients living in remote areas [6]. More recent studies also indicate that telemedicine continues to support chronic disease management in post-pandemic Indonesia [27]. Telemedicine systems are particularly beneficial for diabetes management, cardiovascular monitoring, and follow-up care for autoimmune diseases.

The emergence of AI-enabled telemedicine has further expanded digital healthcare capabilities. Binsar et al. analyzed public trust toward AI-enabled telemedicine systems and found generally positive public sentiment regarding AI-assisted healthcare services [12]. However, the study emphasized the importance of data protection, transparency, and ethical governance for sustaining long-term public trust.

Despite these advancements, telemedicine implementation in Indonesia continues to face challenges, including limited internet connectivity, digital literacy disparities, cybersecurity concerns, and regulatory uncertainties [13].

2.5. Artificial Intelligence in Indonesian healthcare systems

AI applications in Indonesian healthcare systems have expanded rapidly since 2020. AI technologies are increasingly integrated into:

- Radiological imaging analysis
- Tuberculosis detection
- Clinical decision support systems
- Patient triage
- Healthcare analytics

- Predictive disease modeling

Studies show that AI-assisted medical imaging systems improve diagnostic speed and accuracy, particularly in healthcare facilities lacking specialist physicians [24]. AI-based radiology systems are increasingly used for chest X-ray interpretation, COVID-19 screening, and tuberculosis detection.

However, legal and ethical concerns remain significant. Arimbi emphasized that Indonesia still lacks healthcare-specific AI regulatory frameworks, creating uncertainties regarding accountability, patient safety, and legal liability in AI-assisted healthcare services [25].

2.6. Biomedical devices and local medical technology innovation

The COVID-19 pandemic exposed Indonesia's dependency on imported medical devices and highlighted the need for stronger domestic biomedical manufacturing capabilities [28]. During the pandemic, Indonesian researchers, engineers, universities, and industries collaborated to develop emergency ventilators, portable oxygen systems, and low-cost medical equipment.

Studies on Indonesian ventilator development demonstrated that locally produced emergency ventilators successfully addressed shortages during the pandemic period [29]. These innovations illustrated the potential for domestic biomedical engineering industries to contribute to national healthcare resilience.

Recent industrial developments further indicate growing interest in AI- and IoT-based medical devices within Indonesia's healthcare sector. In 2026, Indonesian pharmaceutical and healthcare industries began introducing locally developed AI-enabled medical devices designed to support healthcare independence and strengthen domestic biomedical manufacturing ecosystems.

2.7. Research gaps and future directions

Although biomedical engineering research in Indonesia has expanded significantly, several research gaps remain. First, long-term evaluations of telemedicine effectiveness in rural healthcare settings remain limited. Second, there is insufficient research regarding cybersecurity protection for digital healthcare infrastructure. Third, ethical governance frameworks for AI-assisted healthcare systems remain underdeveloped.

Future biomedical engineering research in Indonesia should prioritize:

- Affordable medical device innovation
- AI governance and ethics
- Rural healthcare technologies
- Interoperable healthcare systems
- Wearable biosensor technologies
- Rehabilitation engineering
- Smart hospital infrastructure

Emerging technologies such as IoMT systems, biomedical robotics, predictive analytics, and personalized medicine may substantially transform Indonesia's healthcare system over the next decade. However, successful implementation requires stronger interdisciplinary collaboration, research investment, industrial partnerships, and supportive regulatory policies.

3. Methodology

This study employed a qualitative descriptive methodology combined with a narrative literature review to analyze the development and applications of biomedical engineering in Indonesia. The research focused on biomedical engineering advancements from 2020 to 2026, particularly in telemedicine, artificial intelligence (AI), medical devices, rehabilitation engineering, and digital healthcare systems.

The study aimed to evaluate how biomedical engineering contributes to Indonesia’s healthcare modernization while addressing challenges related to healthcare accessibility, infrastructure inequality, and technological dependency.

3.1. Research design

A qualitative approach was selected because biomedical engineering in Indonesia involves multidisciplinary interactions among healthcare systems, engineering innovation, policy development, and digital transformation [29]. The narrative review method enabled the integration of evidence from academic journals, healthcare reports, government publications, and institutional documents.

The study emphasized thematic interpretation rather than quantitative statistical analysis. This approach allowed the research to examine technological trends, healthcare applications, and innovation patterns within Indonesia’s biomedical engineering ecosystem.

3.2. Data collection

Secondary data were collected from multiple scientific databases and institutional sources, including:

- Scopus
- PubMed
- IEEE Xplore
- ScienceDirect
- Google Scholar
- World Health Organization (WHO) reports
- Indonesian Ministry of Health publications
- BRIN reports

Table 1: Major data sources and research focus

Source	Research Focus
Scopus and PubMed	Biomedical engineering and healthcare studies
IEEE Xplore	Engineering and AI technologies
WHO Reports	Global and Indonesian healthcare data
Ministry of Health Indonesia	National healthcare policies
BRIN Publications	Indonesian innovation and research development

The main search keywords included:

- Biomedical engineering Indonesia
- Telemedicine Indonesia
- AI in healthcare
- Medical devices Indonesia
- Digital health systems

- Healthcare technology

3.3. Inclusion criteria

The study included:

1. Peer-reviewed studies published from 2020 to 2026
2. Research related to biomedical engineering and healthcare technology
3. Studies focusing on Indonesia or Southeast Asia
4. English- and Indonesian-language publications
5. Government and institutional healthcare reports

Publications unrelated to healthcare technology or lacking scientific credibility were excluded.

3.4. Data analysis

The collected literature was analyzed using thematic analysis [29]. The analysis identified recurring themes related to:

- Telemedicine
- AI-assisted healthcare
- Medical device innovation
- Biomedical imaging
- Rehabilitation engineering
- Electronic medical records
- Healthcare digitalization

Thematic analysis enabled the study to evaluate how biomedical engineering technologies address Indonesian healthcare challenges, including limited access to healthcare, a shortage of specialists, and uneven distribution of infrastructure.

3.5. Case study approach

Several Indonesian biomedical engineering initiatives were analyzed as case studies to connect theoretical concepts with real healthcare applications.

Table 2: Indonesian biomedical engineering case studies

Case Study	Biomedical Engineering Area	Healthcare Contribution
COVID-19 emergency ventilators	Medical devices	Reduced equipment shortages
Halodoc telemedicine platform	Digital healthcare	Expanded remote consultations
AI-based tuberculosis detection	Medical imaging	Improved diagnostic efficiency
Electronic medical records	Health informatics	Enhanced healthcare data management
Smart rehabilitation devices	Rehabilitation engineering	Improved disability support

These case studies demonstrated how biomedical engineering technologies contribute to healthcare accessibility, efficiency, and resilience within Indonesia.

3.6. Ethical considerations and limitations

The study used publicly available secondary data; therefore, no human participants or confidential patient information were involved. Ethical considerations included proper citation, academic integrity, and responsible interpretation of findings.

Several limitations should also be acknowledged. First, the study relied on secondary literature rather than direct field observations. Second, some Indonesian biomedical engineering initiatives remain insufficiently documented in indexed journals. Third, healthcare technology adoption varies significantly across Indonesian regions, limiting nationwide generalization.

Despite these limitations, the methodology provides a comprehensive overview of the development of biomedical engineering and the transformation of healthcare technology in Indonesia.

4. Results and Findings

The findings of this study indicate that biomedical engineering in Indonesia has experienced significant growth between 2020 and 2026, particularly in digital healthcare systems, telemedicine platforms, medical device innovation, rehabilitation engineering, and artificial intelligence (AI)-assisted healthcare technologies. The expansion of biomedical engineering has been strongly influenced by modernization programs in healthcare, rising healthcare demands, and technological acceleration following the COVID-19 pandemic.

The results further show that biomedical engineering contributes substantially to improving healthcare accessibility, hospital efficiency, disease monitoring, and local medical technology development. However, challenges related to infrastructure inequality, limited research funding, and dependence on imported medical devices remain significant barriers.

4.1. Growth of biomedical engineering in Indonesia

Biomedical engineering programs and healthcare technology initiatives have expanded rapidly across Indonesian universities and healthcare institutions. Major universities increasingly integrate biomedical engineering with computer science, electrical engineering, artificial intelligence, and healthcare informatics.

As shown in Table 1, several Indonesian universities have established specialized biomedical engineering research areas and healthcare technology collaborations.

Table 1: Major Indonesian universities and biomedical engineering focus areas

University	Biomedical Engineering Focus Area	Major Contribution
Institut Teknologi Bandung	Biosignal processing and medical instrumentation	Smart diagnostic systems
Universitas Indonesia	Clinical engineering and biomaterials	Hospital technology systems
Universitas Gadjah Mada	Telemedicine and health informatics	Rural healthcare technologies
Institut Teknologi Sepuluh Nopember	Rehabilitation engineering	Assistive medical devices
Universitas Airlangga	Biomedical imaging	AI-assisted diagnostics

The findings indicate that university-industry-hospital collaborations are increasingly common in Indonesia’s healthcare technology ecosystem. Biomedical engineering

laboratories now focus on practical healthcare applications such as portable diagnostic devices, wearable sensors, and AI-assisted imaging systems.

Figure 1 illustrates the overall biomedical engineering ecosystem in Indonesia.

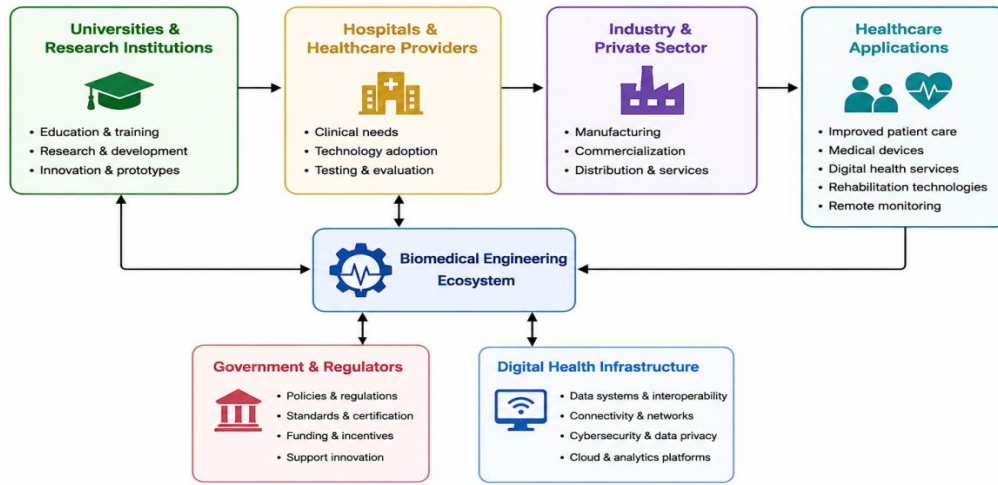


Figure 1: Biomedical engineering ecosystem in Indonesia

As shown in Figure 1, biomedical engineering development in Indonesia depends heavily on interdisciplinary collaboration among academic institutions, healthcare providers, government agencies, and private industries.

4.2. Telemedicine and digital healthcare expansion

One of the most significant findings involves the rapid expansion of telemedicine and digital healthcare platforms across Indonesia. Telemedicine adoption increased substantially during the COVID-19 pandemic and continued to expand afterward, driven by greater public acceptance and healthcare digitization initiatives.

The study found that telemedicine platforms contribute to:

- Remote healthcare consultations
- Chronic disease monitoring
- Electronic prescriptions
- Healthcare accessibility in remote regions
- Reduced hospital congestion

As illustrated in Table 2, telemedicine technologies offer multiple healthcare benefits in Indonesia's archipelagic geography.

Table 2: Contributions of telemedicine in Indonesian healthcare

Telemedicine Function	Healthcare Benefit
Online consultation	Improved healthcare accessibility
Remote patient monitoring	Better chronic disease management
Digital prescriptions	Faster medication access
Mobile health applications	Increased patient engagement
Virtual triage systems	Reduced hospital overcrowding

The findings indicate that telemedicine adoption is highest in urban regions such as Jakarta, Surabaya, Bandung, and Yogyakarta, where digital infrastructure is more developed. However, limitations in internet connectivity continue to restrict implementation on rural and remote islands.

Figure 2 presents the major telemedicine implementation challenges identified in Indonesia.

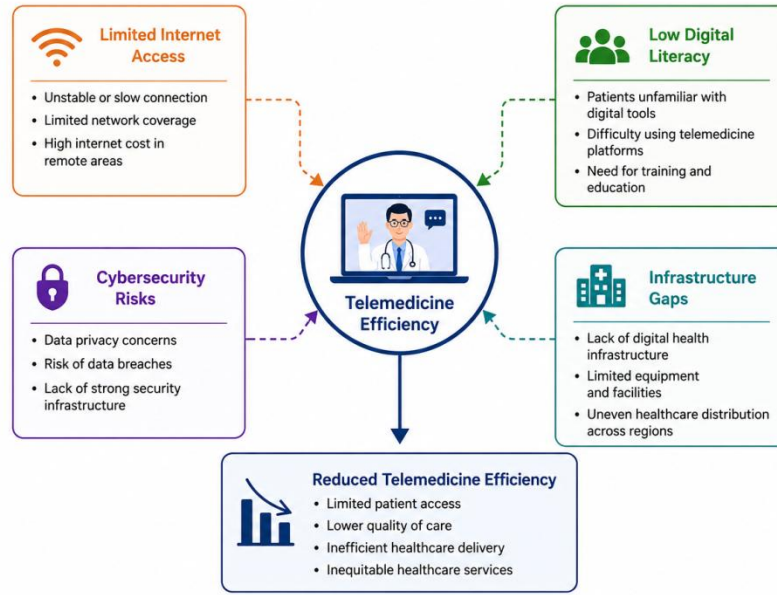


Figure 2: Telemedicine challenges in Indonesia

As shown in Figure 2, technological and infrastructural disparities remain major barriers to equitable telemedicine deployment.

4.3. Medical device innovation and local manufacturing

The findings demonstrate increasing domestic biomedical engineering innovation in response to healthcare equipment shortages and import dependency. During the COVID-19 pandemic, Indonesia accelerated local production of emergency ventilators, oxygen systems, and personal protective equipment (PPE).

Biomedical engineers collaborated with hospitals, universities, and industry to develop emergency healthcare technologies that support national healthcare resilience.

Table 3: Indonesian biomedical device innovations

Biomedical Technology	Primary Function	Impact
Emergency ventilators	Respiratory support	Reduced equipment shortages
Portable oxygen systems	Emergency treatment	Improved hospital readiness
Smart biosensors	Patient monitoring	Real-time health tracking
Wearable health devices	Chronic disease monitoring	Improved patient management
AI diagnostic systems	Disease detection	Faster diagnosis

The findings indicate that Indonesia continues to import a large share of advanced medical devices, including MRI systems, CT scanners, robotic surgical systems, and laboratory analyzers. However, local manufacturing capability is gradually increasing through government-supported healthcare industrialization initiatives.

Figure 4.3 illustrates Indonesia’s medical device development pathway.

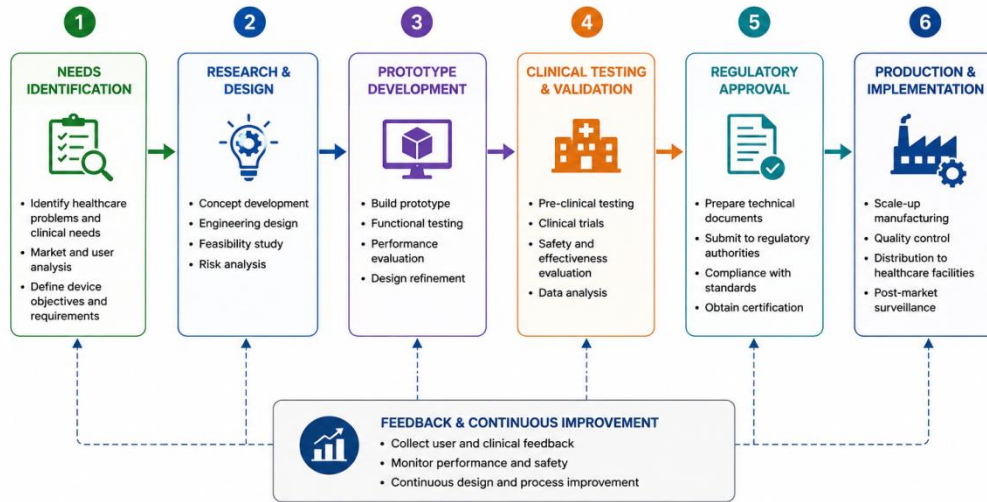


Figure 3: Indonesian medical device development framework

As shown in Figure 3, successful biomedical device development requires integration between engineering innovation, clinical validation, and regulatory systems.

4.4. Artificial intelligence in healthcare systems

Artificial intelligence has become increasingly integrated into Indonesia’s healthcare systems, particularly in diagnostic imaging, predictive analytics, and patient monitoring. The findings show that AI technologies improve healthcare efficiency by supporting faster clinical decision-making and reducing diagnostic workloads.

AI applications identified in Indonesian healthcare include:

- Tuberculosis screening
- Radiological image analysis
- Predictive disease analytics
- Smart triage systems
- Clinical decision support systems

Table 4: AI applications in Indonesian healthcare

AI Application	Biomedical Engineering Area	Clinical Benefit
AI radiology systems	Medical imaging	Faster image interpretation
Tuberculosis detection AI	Public health diagnostics	Improved screening efficiency
Predictive analytics	Health informatics	Early disease prediction
Smart triage systems	Emergency healthcare	Improved patient prioritization
AI wearable monitoring	Biosensors	Continuous patient observation

The findings indicate that AI-assisted healthcare technologies are especially valuable in regions experiencing shortages of medical specialists and radiologists.

Figure 4 summarizes the operational workflow of AI-assisted healthcare systems.

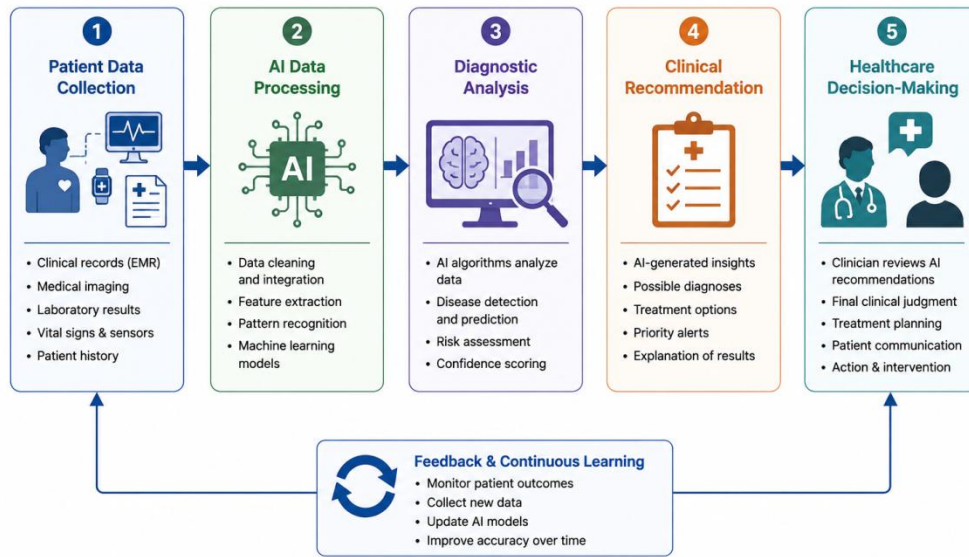


Figure 4: AI-Assisted Healthcare Workflow

As shown in Figure 4, AI systems primarily serve as clinical support tools rather than as replacements for healthcare professionals.

4.5. Rehabilitation engineering and assistive technologies

The study found increasing demand for rehabilitation engineering technologies in Indonesia due to rising cases of stroke, disability, workplace injuries, and age-related mobility limitations.

Biomedical engineering innovations in rehabilitation include:

- Smart prosthetics
- Robotic rehabilitation systems
- Smart wheelchairs
- Motion monitoring systems
- Assistive wearable devices

Table 5: Rehabilitation engineering technologies in Indonesia

Technology	Function	Healthcare Contribution
Smart prosthetics	Limb replacement support	Improved mobility
Robotic rehabilitation	Physical therapy assistance	Faster rehabilitation
Smart wheelchairs	Mobility assistance	Increased patient independence
Wearable rehabilitation sensors	Motion monitoring	Real-time therapy evaluation
Exoskeleton devices	Assisted movement	Enhanced rehabilitation outcomes

The findings suggest that affordability remains one of the most important factors affecting the adoption of rehabilitation technology in Indonesia. Low-cost biomedical engineering solutions are therefore critical for improving accessibility among lower-income populations.

4.6. Major findings summary

Overall, the findings demonstrate that biomedical engineering is becoming increasingly important within Indonesia’s healthcare system. Biomedical technologies support healthcare accessibility, digital transformation, disease management, and healthcare resilience.

Figure 5 summarizes the major biomedical engineering contributions identified in this study.

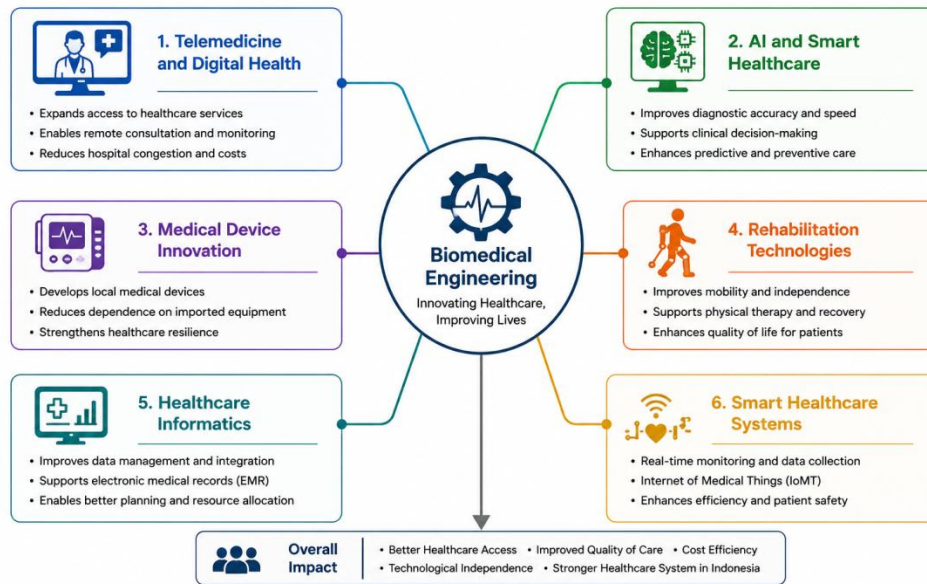


Figure 5: Major contributions of biomedical engineering in Indonesia

As illustrated in Figure 5, biomedical engineering contributes to multiple sectors simultaneously, making it a critical driver of healthcare modernization and technological advancement in Indonesia.

5. Discussion

The findings demonstrate that biomedical engineering has become an important driver of healthcare modernization in Indonesia. The integration of telemedicine, artificial intelligence (AI), medical devices, rehabilitation technologies, and healthcare informatics has improved healthcare accessibility, efficiency, and clinical decision-making. As shown in Figure 5, biomedical engineering contributes to multiple healthcare sectors simultaneously, supporting both technological innovation and public health development.

One of the most significant developments is the expansion of telemedicine and digital healthcare systems. Indonesia's geographic conditions, consisting of thousands of islands, create major challenges for healthcare distribution. Telemedicine platforms help reduce these barriers by enabling remote consultations, digital prescriptions, and patient monitoring. As

presented in Figure 2, however, internet limitations, digital literacy gaps, and cybersecurity risks continue to affect telemedicine efficiency, particularly in rural areas.

The study also found increasing adoption of AI-assisted healthcare systems. AI technologies support radiological analysis, disease screening, and predictive healthcare analytics. The workflow illustrated in Figure 4 shows that AI primarily serves as a clinical support tool, assisting healthcare professionals in decision-making. These technologies are especially valuable in regions experiencing shortages of medical specialists and diagnostic experts.

Another important finding involves Indonesia's growing medical device innovation ecosystem. During the COVID-19 pandemic, local biomedical engineers developed emergency ventilators and monitoring devices to address equipment shortages. As shown in Figure 3, medical device development in Indonesia involves multiple stages, including research, prototyping, clinical testing, regulatory approval, and implementation. This indicates that biomedical engineering increasingly contributes to healthcare resilience and technological independence.

The results further reveal that Indonesian universities play a critical role in the development of biomedical engineering. Academic institutions support research, innovation, and workforce development in areas such as medical instrumentation, rehabilitation engineering, biosensors, and health informatics. Collaboration among universities, hospitals, industries, and government agencies underpins Indonesia's biomedical engineering ecosystem, as illustrated in Figure 1.

Despite these advancements, several challenges remain. Indonesia still depends heavily on imported advanced medical equipment such as MRI systems and robotic surgical technologies. Limited research funding, unequal healthcare infrastructure, and a shortage of biomedical engineering professionals continue to slow technological growth. Regulatory and cybersecurity concerns also become increasingly important as healthcare systems adopt AI and digital technologies.

Overall, the discussion indicates that biomedical engineering has strong potential to support Indonesia's healthcare transformation. Future development should prioritize affordable healthcare technologies, AI governance, expansion of digital infrastructure, and local medical device manufacturing to improve healthcare accessibility and national technological capability.

6. Conclusion

Biomedical engineering has become an increasingly important component of healthcare development and technological innovation in Indonesia. The findings of this study demonstrate that biomedical engineering contributes significantly to healthcare accessibility, medical device innovation, digital health transformation, rehabilitation technologies, and AI-assisted healthcare systems. These advancements support Indonesia's efforts to modernize healthcare services while addressing challenges related to geographic inequality, disease burden, and limited healthcare infrastructure.

The expansion of telemedicine platforms, electronic medical records, wearable monitoring systems, and AI-based diagnostic technologies has improved healthcare efficiency and patient management. As illustrated in Figure 2 and Figure 4, digital healthcare technologies enable remote healthcare delivery and support clinical decision-making, particularly in underserved areas. Similarly, local medical device development, shown in Figure 4.3, highlights

Indonesia's growing capability to strengthen healthcare resilience and reduce dependence on imported technologies.

The study also confirms the important role of universities, hospitals, industries, and government agencies in supporting biomedical engineering innovation. As shown in Figure 1, collaboration among these sectors underpins Indonesia's biomedical engineering ecosystem. Research institutions and healthcare providers increasingly contribute to the development of practical healthcare technologies adapted to local healthcare needs.

Despite this progress, several limitations remain, including unequal access to digital infrastructure, limited research funding, a shortage of biomedical engineering professionals, and regulatory challenges associated with AI and digital healthcare systems. These barriers continue to affect the scalability and sustainability of biomedical engineering implementation across Indonesia.

Overall, biomedical engineering offers significant potential to improve healthcare quality, accessibility, and technological independence in Indonesia. Future development should focus on strengthening digital healthcare infrastructure, expanding biomedical engineering education, supporting local medical device industries, and improving interdisciplinary collaboration. Through sustained investment and innovation, biomedical engineering can become a major driver of Indonesia's healthcare modernization and national technological advancement.

References

- [1] Karkanis, N., Giannakoulas, A., Zoiros, K. E., Kaifas, T. N., & A., G. (2025). Digital telecommunications in medicine and biomedical engineering: Applications, challenges, and future directions. *Eng*, 7(1), 19. DOI:10.3390/eng7010019.
- [2] World Health Organization Indonesia. (2022). *Indonesia health system review*. Jakarta, Indonesia: WHO Indonesia.
- [3] Pratama, C. G., Nurlianti, R., Herstatt, C., & Goeldner, M. (2026). Telemedicine adoption for managing chronic and rare diseases in Indonesia during and beyond the COVID-19 era: Qualitative study. *Journal of Medical Internet Research*, 28, e83462. DOI:10.2196/83462.
- [4] Juliansyah, R., Aqid, B. M., Salsabila, A. P., & Nurfiyanti, K. (2024). Implementation of EMR system in Indonesian health facilities: Benefits and constraints. *arXiv*. DOI:10.7454/ihpa.v10i1.1140.
- [5] Alexandra, S., Handayani, P. W., & Azzahro, F. (2021). Indonesian hospital telemedicine acceptance model: The influence of user behavior and technological dimensions. *Heliyon*, 7(12), e08599. DOI:10.1016/j.heliyon.2021.e08599.
- [6] Andiani, A. F., Putra, B. T. W., & Khoiri, A. (2022). The future of telemedicine in Indonesia during the COVID-19 pandemic era: Literature review. *Health Technology Assessment in Action*, 6(2), 1–10.
- [7] Kementerian Kesehatan Republik Indonesia. (2023). *Indonesia Health Profile 2023*. Jakarta, Indonesia: Ministry of Health, Republic of Indonesia.
- [8] Cheah, J. S. S., Lim, P. H., Amran, A., Fianto, B. A., Anisha, A. I. I. N., & Gan, C. (2025). Digital transformation in healthcare: Investigating key determinants of examining telemedicine adoption. *SAGE Open*, 15(4), 21582440251.

- [9] Nguyen, A. D., White, S. J., Tse, T., Cartmill, J. A., Roger, P., Hatem, S., & Willcock, S. M. (2024). Communication during telemedicine consultations in general practice: Perspectives from general practitioners and their patients. *BMC Primary Care*, 25, 324. DOI:10.1186/s12875-024-02576-1.
- [10] Abuzairi, T., Irfan, A., & Basari. (2021). COVENT-Tester: A low-cost, open source ventilator tester. *HardwareX*, 9, e00196. DOI:10.1016/j.ohx.2021.e00196.
- [11] Macariola, A. D., Santarin, T. M. C., Villalflor, F. J. M., Villaluna, L. M. G., Yonzon, R. S. L., Fermin, J. L., Kee, S. L., AlDahoul, N., Karim, H. A., & Tan, M. J. T. (2021). Breaking barriers amid the pandemic: The status of telehealth in Southeast Asia and its potential as a healthcare delivery model in the Philippines. *Frontiers in Pharmacology*, 12, 754011. DOI:10.3389/fphar.2021.754011.
- [12] Arimbi, D. (2025). Artificial intelligence in telemedicine: Regulatory challenges and legal accountability in Indonesia. *Journal of Law, Politics and Humanities*, 6(1), 405–418. DOI:10.38035/jlph.v6i1.2475.
- [13] Gómez-González, E., Gomez, E., Márquez-Rivas, J., Guerrero-Claro, M., Fernández-Lizaranzu, I., Relimpio-López, M. I., Dorado, M. E., Mayorga-Buiza, M. J., Izquierdo-Ayuso, G., & Capitán-Morales, L. (2020). Artificial intelligence in medicine and healthcare: A review and classification of current and near-future applications and their ethical and social impact. *arXiv*. Retrieved from <https://arxiv.org/abs/2001.09778>
- [14] Elrashedy, A., Shehata, O., Bedair, Y. M., Ghapn, N., Elsaady, I. K., Salem, A. M., Mohamed, T. E., Saber, M. S., Awad, S., & Hasan, M. E. (2025). Transforming healthcare technology in crisis: A review of biomedical engineering, AI integration, and smart procurement systems. *Egyptian Journal of Health Sciences Technology*, 5(2), 44–62.
- [15] OECD. (2026). *AI in healthcare: Progress in implementing the European Union coordinated plan on artificial intelligence*. Paris, France: OECD Publishing.
- [16] Tu, T., Azizi, S., Driess, D., Schaekermann, M., Amin, M., Chang, P. C., Carroll, A., Lau, C., Tanno, R., Ktena, I., Mustafa, B., Chowdhery, A., Liu, Y., Kornblith, S., Fleet, D., Mansfield, P., Prakash, S., Wong, R., Virmani, S., & Natarajan, V. (2023). *Towards generalist biomedical AI*. *arXiv*. Retrieved from <https://arxiv.org/abs/2307.14334>
- [17] OECD. (2025). *Health at a glance: Digital transformation and artificial intelligence in healthcare*. Paris, France: OECD Publishing.
- [18] World Health Organization. (2021). *Global strategy on digital health 2020–2025*. Geneva, Switzerland: WHO.
- [19] Ministry of Health, Republic of Indonesia. (2024). *Blueprint of Indonesia's digital health transformation strategy 2024*. Jakarta, Indonesia: Ministry of Health.
- [20] BRIN. (2024). *National research and innovation roadmap for healthcare technology*. Jakarta, Indonesia: National Research and Innovation Agency.
- [21] Binsar, F., Hamsal, M., Tenggono, E., Abdurohman, M., Hanafi, R., & Wahyudi, I. (2026). Public trust in AI-enabled telemedicine: Affective, cognitive, and structural dimensions insights from multi-platform big data analytics. *Frontiers in Medical Technology*, 8, 1789495. DOI:10.3389/fmed.2026.1789495.
- [22] Standards Alliance MDRC. (2022). *AI-based medical devices integration to support health technology transformation in Indonesia*. Jakarta, Indonesia: Standards Alliance MDRC.

- [23] Darya-Varia and ASKI. (2026). AI & IoT-based locally developed medical devices are strengthening national industry independence. Jakarta, Indonesia.
- [24] Takona, J. P. (2024). Research design: Qualitative, quantitative, and mixed methods approaches / sixth edition. *Quality & Quantity*, 58, 1011–1013. DOI:10.1007/s11135-023-01798-2.
- [25] Braun, V., & Clarke, V. (2022). *Thematic analysis: A practical guide*. London, United Kingdom: SAGE Publications.
- [26] Yin, R. K. (2024). *Case study research and applications: Design and methods (7th ed.)*. Thousand Oaks, CA, USA: SAGE Publications.
- [27] ASEAN Secretariat. (2025). *Digital health transformation in Southeast Asia*. Jakarta, Indonesia: ASEAN Secretariat.
- [28] World Health Organization. (2021). *Ethics and governance of artificial intelligence for health*. Geneva, Switzerland: WHO.
- [29] Creswell, J. W., & Creswell, J. D. (2023). *Research design: Qualitative, quantitative, and mixed methods approaches (6th ed.)*. Thousand Oaks, CA, USA: SAGE Publications.